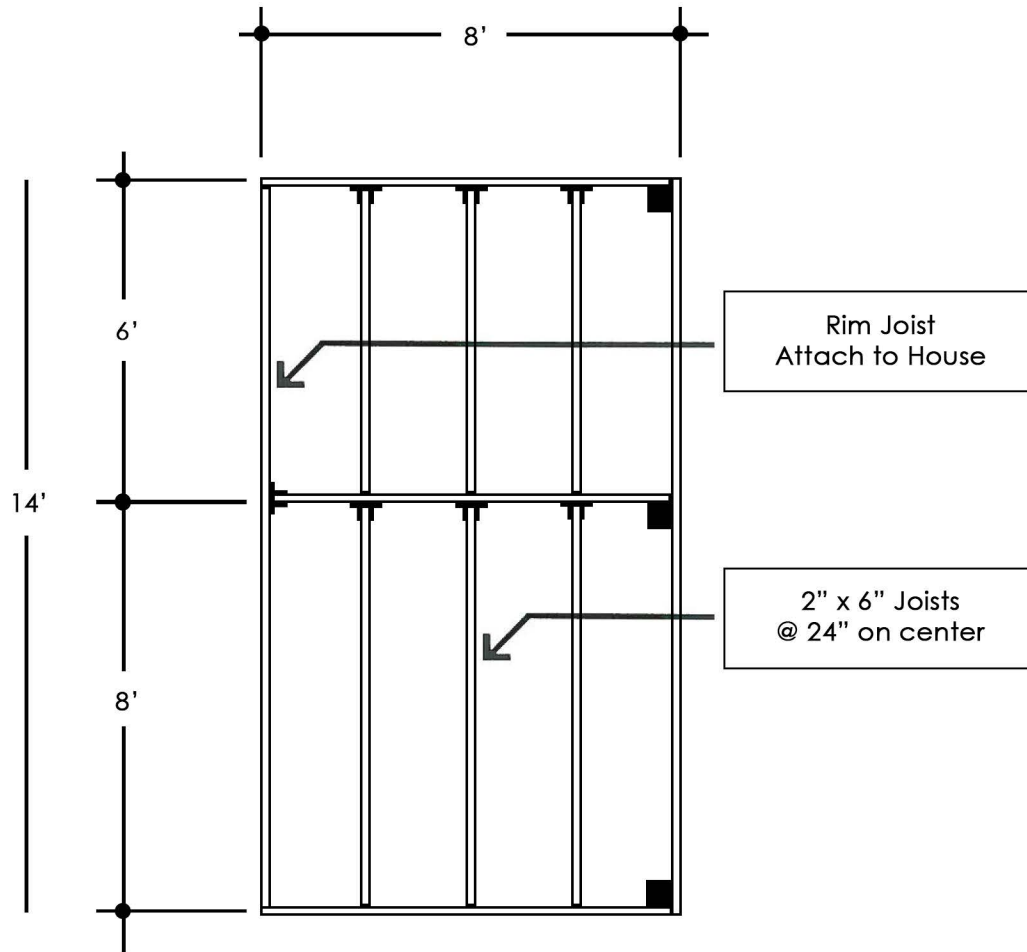


# 8'x14'

## Deck Package

### 2" Decking



Deck Framing Layout

SYMBOLS	
TT	-- Joist Hanger
■	-- 4" x 4" Post

## MATERIAL LIST

<input type="checkbox"/>	46 - 2" x 4" x 8' Decking 7.5 lb - #16 Casing Nails	Please Check One
<input type="checkbox"/>	30 - 2" x 6" x 8' Decking 4.5 lb - #16 Casing Nails	

3	2"x6"x6' P.T. Fir
6	2"x6"x8' P.T. Fir
2	2"x6"x14' P.T. Fir
7	2"x6" Joist Hangers
3	4"x4"x2' P.T. Fir
1 bg	Concrete, Pre-mix
1.5 lb	#16 Box Nails
1 lb	Teco Nails (for Joist Hgr)

## RICK'S

CUSTOM FENCING & DECKING

[www.RicksFencing.com](http://www.RicksFencing.com)

HILLSBORO	(503) 640-5434
GRESHAM	(503) 669-0795
SALEM	(503) 463-8331
VANCOUVER	(360) 253-3792
TRI-CITIES	(509) 736-3325

See Deck Brochure for Complete Installation Instructions