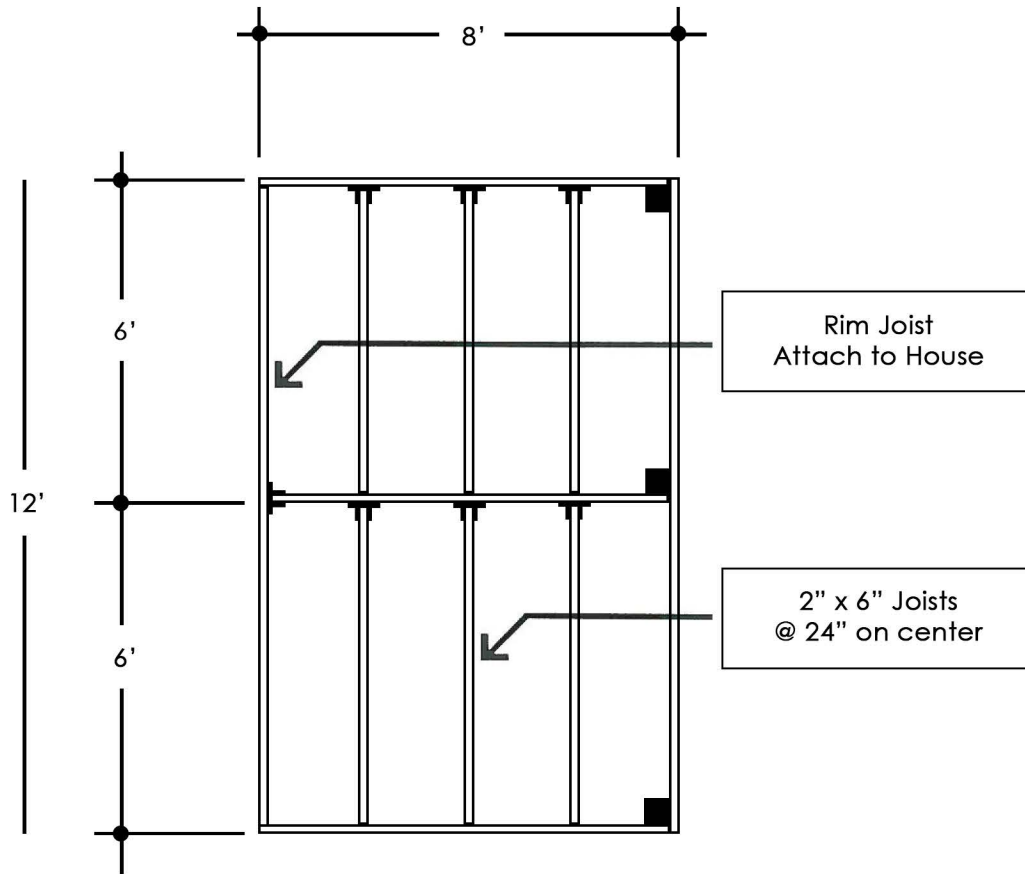


# 8'x12'

## Deck Package

### 2" Decking



Deck Framing Layout

| SYMBOLS |                 |
|---------|-----------------|
| TT      | -- Joist Hanger |
| ■       | -- 4" x 4" Post |

## MATERIAL LIST

|                          |  |                        |
|--------------------------|--|------------------------|
| <input type="checkbox"/> | 40 - 2" x 4" x 8' Decking<br>6.5 lb - #16 Casing Nails | Please<br>Check<br>One |
| <input type="checkbox"/> | 26 - 2" x 6" x 8' Decking<br>4 lb - #16 Casing Nails   |                        |

- 6 2"x6"x6' P.T. Fir
- 3 2"x6"x8' P.T. Fir
- 2 2"x6"x12' P.T. Fir
- 7 2"x6" Joist Hangers
- 3 4"x4"x2' P.T. Fir
- 1 bg Concrete, Pre-mix
- 1 lb #16 Box Nails
- 1 lb Teco Nails (for Joist Hgr)

## RICK'S

CUSTOM FENCING & DECKING

[www.RicksFencing.com](http://www.RicksFencing.com)

|            |                |
|------------|----------------|
| HILLSBORO  | (503) 640-5434 |
| GRESHAM    | (503) 669-0795 |
| SALEM      | (503) 463-8331 |
| VANCOUVER  | (360) 253-3792 |
| TRI-CITIES | (509) 736-3325 |

See Deck Brochure for Complete Installation Instructions