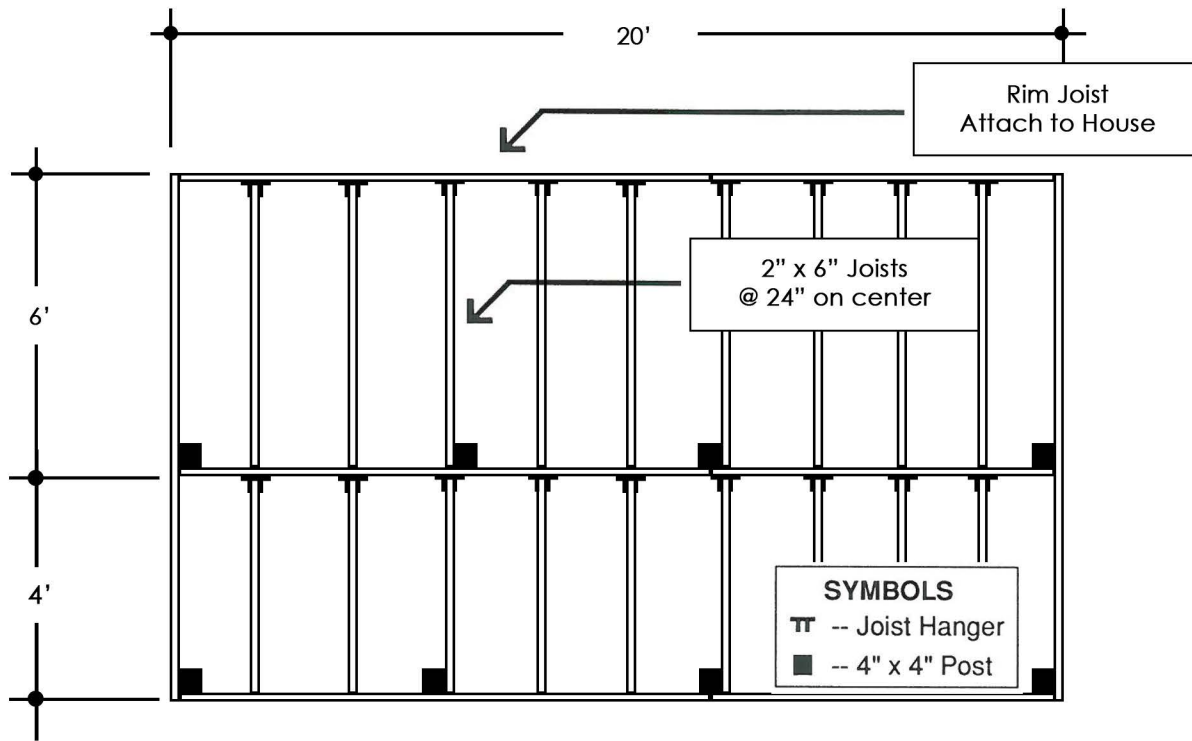


20'x10' Deck Package 2" Decking



Deck Framing Layout

8'	8'	4'
4'	8'	8'
8'	8'	4'
4'	8'	8'

Deck Surface Pattern

MATERIAL LIST

<input type="checkbox"/>	33 - 2" x 4" x 4' Decking 66 - 2" x 4" x 8' Decking 13.5 lb - #16 Casing Nails	Please Check One
<input type="checkbox"/>	21 - 2" x 6" x 4' Decking 42 - 2" x 6" x 8' Decking 8 lb - #16 Casing Nails	

- 9 2"x6"x4' P.T. Fir
- 9 2"x6"x6' P.T. Fir
- 3 2"x6"x8' P.T. Fir
- 2 2"x6"x10' P.T. Fir
- 3 2"x6"x12' P.T. Fir
- 18 2"x6" Joist Hangers
- 8 4"x4"x2' P.T. Fir
- 3 bg Concrete, Pre-mix
- 2 lb #16 Box Nails
- 1.5 lb Teco Nails (for Joist Hgr)

See Deck Brochure for Complete Installation Instructions

RICK'S
CUSTOM FENCING & DECKING
www.RicksFencing.com

HILLSBORO (503) 640-5434
 GRESHAM (503) 669-0795
 SALEM (503) 463-8331
 VANCOUVER (360) 253-3792
 TRI-CITIES (509) 736-3325