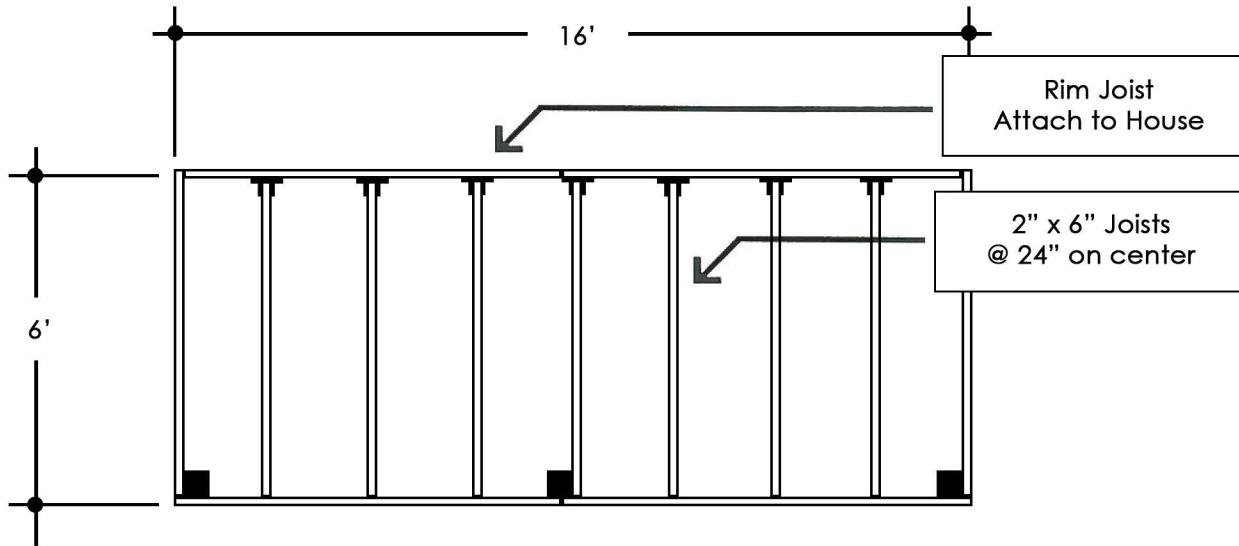


# 16'x6'

## Deck Package

### 2" Decking

### MATERIAL LIST



Deck Framing Layout

SYMBOLS	
	-- Joist Hanger
	-- 4" x 4" Post

<input type="checkbox"/>	20 - 2" x 4" x 4' Decking	Please Check One
	30 - 2" x 4" x 8' Decking	
	6.5 lb - #16 Casing Nails	
<input type="checkbox"/>	12 - 2" x 6" x 4' Decking	Please Check One
	20 - 2" x 6" x 8' Decking	
	4 lb - #16 Casing Nails	

- 9 2"x6"x6' P.T. Fir
- 4 2"x6"x8' P.T. Fir
- 7 2"x6" Joist Hangers
- 3 4"x4"x2' P.T. Fir
- 1 bg Concrete, Pre-mix
- 1 lb #16 Box Nails
- 1 lb Teco Nails (for Joist Hgr)

8'		8'	
4'	8'		4'
8'		8'	
4'	8'		4'

Deck Surface Pattern

**RICK'S**  
**CUSTOM FENCING & DECKING**  
[www.RicksFencing.com](http://www.RicksFencing.com)

HILLSBORO (503) 640-5434  
 GRESHAM (503) 669-0795  
 SALEM (503) 463-8331  
 VANCOUVER (360) 253-3792  
 TRI-CITIES (509) 736-3325

See Deck Brochure for Complete Installation Instructions