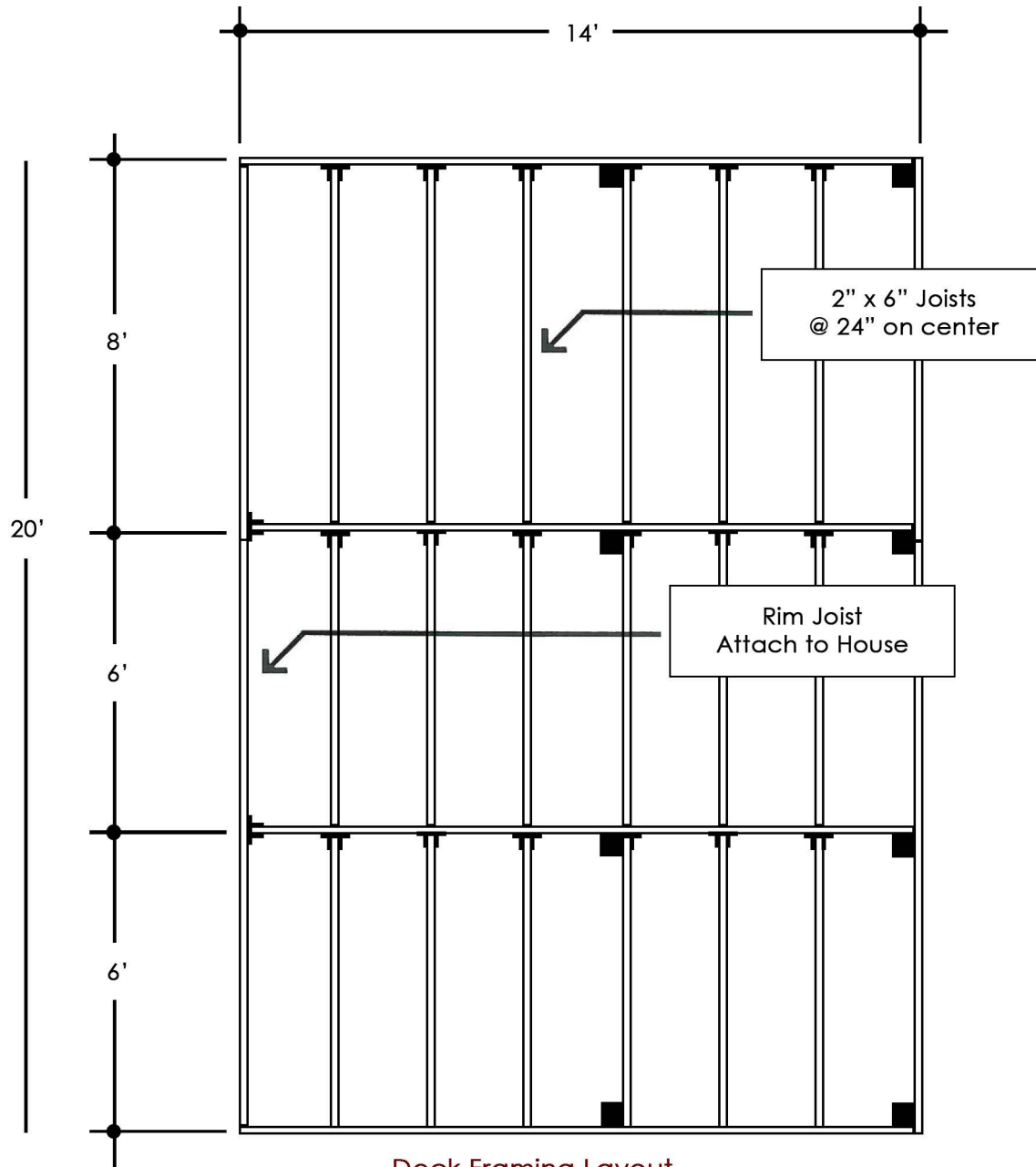


# 14'x20'

## Deck Package

### 2" Decking

### MATERIAL LIST



Deck Framing Layout

8'		6'	
4'	10'		
8'		6'	
4'	10'		

**SYMBOLS**  
 TT -- Joist Hanger  
 ■ -- 4" x 4" Post

Deck Surface Pattern

<input type="checkbox"/>	33 - 2" x 4" x 4' Decking 33 - 2" x 4" x 6' Decking 33 - 2" x 4" x 8' Decking 33 - 2" x 4" x 10' Decking 19 lb - #16 Casing Nails	Please Check One
<input type="checkbox"/>	21 - 2" x 6" x 4' Decking 22 - 2" x 6" x 6' Decking 22 - 2" x 6" x 8' Decking 21 - 2" x 6" x 10' Decking 11.5 lb - #16 Casing Nails	

- 12 2"x6"x6' P.T. Fir
- 8 2"x6"x8' P.T. Fir
- 2 2"x6"x12' P.T. Fir
- 4 2"x6"x14' P.T. Fir
- 20 2"x6" Joist Hangers
- 8 4"x4"x2' P.T. Fir
- 3 bg Concrete, Pre-mix
- 3 lb #16 Box Nails
- 2 lb Teco Nails (for Joist Hgr)

**RICK'S**  
**CUSTOM FENCING & DECKING**  
[www.RicksFencing.com](http://www.RicksFencing.com)

HILLSBORO (503) 640-5434  
 GRESHAM (503) 669-0795  
 SALEM (503) 463-8331  
 VANCOUVER (360) 253-3792  
 TRI-CITIES (509) 736-3325

See Deck Brochure for Complete Installation Instructions