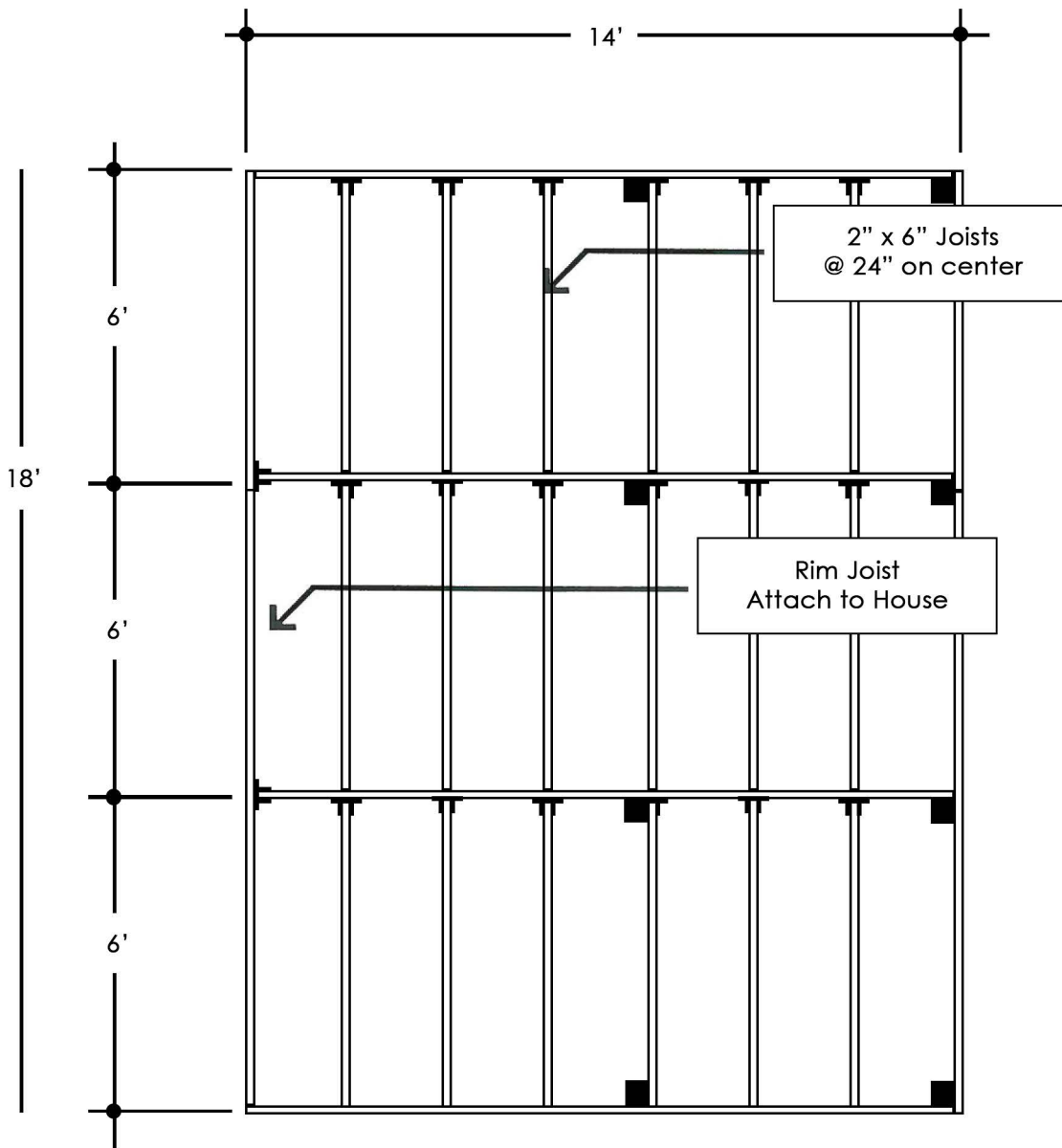


# 14'x18'

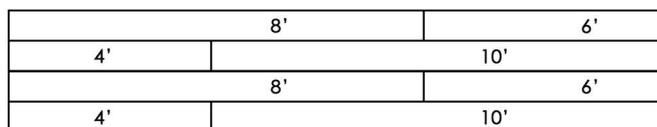
## Deck Package

### 2" Decking

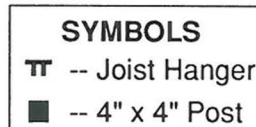
### MATERIAL LIST



Deck Framing Layout



Deck Surface Pattern



<input type="checkbox"/>	29 - 2" x 4" x 4' Decking	Please Check One
	30 - 2" x 4" x 6' Decking	
	30 - 2" x 4" x 8' Decking	
	29 - 2" x 4" x 10' Decking	
	17 lb - #16 Casing Nails	
<input type="checkbox"/>	19 - 2" x 6" x 4' Decking	Please Check One
	19 - 2" x 6" x 6' Decking	
	19 - 2" x 6" x 8' Decking	
	19 - 2" x 6" x 10' Decking	
	10.5 lb - #16 Casing Nails	

- 20 2"x6"x6' P.T. Fir
- 2 2"x6"x12' P.T. Fir
- 4 2"x6"x14' P.T. Fir
- 18 2"x6" Joist Hangers
- 8 4"x4"x2' P.T. Fir
- 3 bg Concrete, Pre-mix
- 3 lb #16 Box Nails
- 1.5 lb Teco Nails (for Joist Hgr)

**RICK'S**  
**CUSTOM FENCING & DECKING**  
[www.RicksFencing.com](http://www.RicksFencing.com)

HILLSBORO (503) 640-5434  
 GRESHAM (503) 669-0795  
 SALEM (503) 463-8331  
 VANCOUVER (360) 253-3792  
 TRI-CITIES (509) 736-3325

See Deck Brochure for Complete Installation Instructions