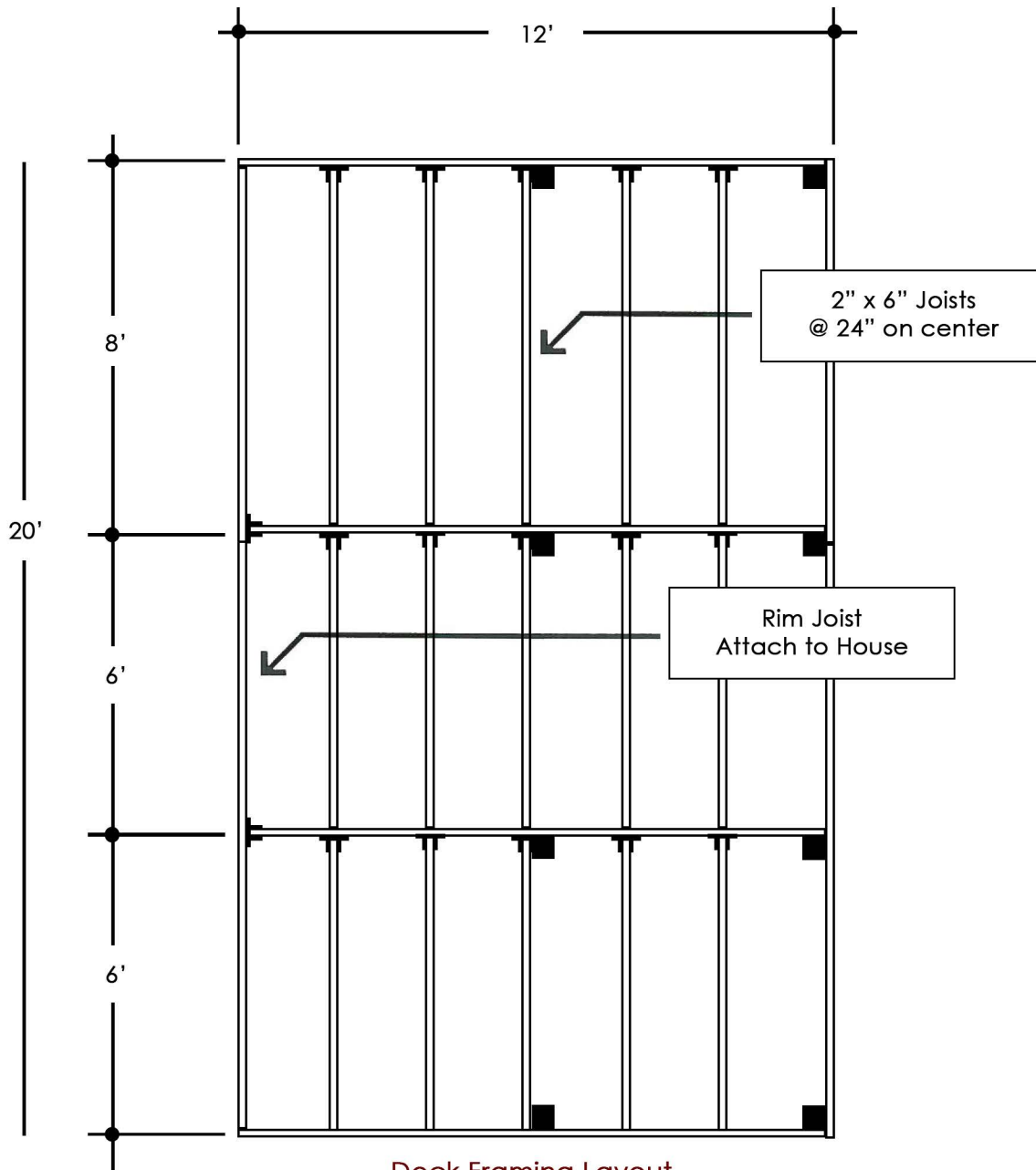


12'x20'

Deck Package

2" Decking

MATERIAL LIST



<input type="checkbox"/>	66 - 2" x 4" x 4' Decking 66 - 2" x 4" x 8' Decking 16 lb - #16 Casing Nails	Please Check One
<input type="checkbox"/>	43 - 2" x 6" x 4' Decking 43 - 2" x 6" x 8' Decking 10 lb - #16 Casing Nails	

- 10 2"x6"x6' P.T. Fir
- 7 2"x6"x8' P.T. Fir
- 6 2"x6"x12' P.T. Fir
- 17 2"x6" Joist Hangers
- 8 4"x4"x2' P.T. Fir
- 3 bg Concrete, Pre-mix
- 2.5 lb #16 Box Nails
- 1.5 lb Teco Nails (for Joist Hgr)

Deck Framing Layout

4'	8'	
	8'	4'
4'	8'	4'
	8'	4'

Deck Surface Pattern

SYMBOLS	
TT	-- Joist Hanger
■	-- 4" x 4" Post

RICK'S
CUSTOM FENCING & DECKING
www.RicksFencing.com

HILLSBORO (503) 640-5434
 GRESHAM (503) 669-0795
 SALEM (503) 463-8331
 VANCOUVER (360) 253-3792
 TRI-CITIES (509) 736-3325

See Deck Brochure for Complete Installation Instructions