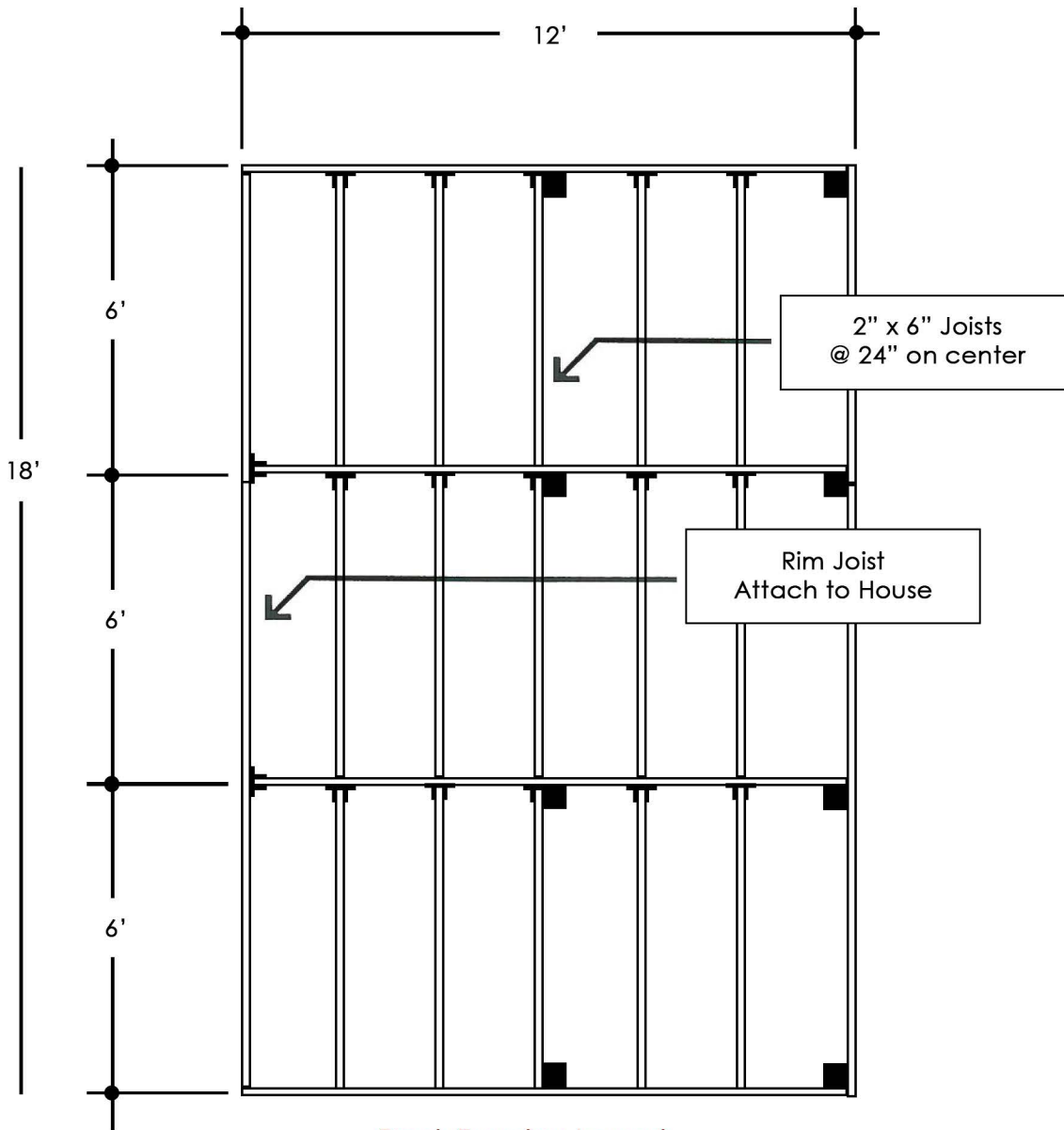


# 12'x18'

## Deck Package

### 2" Decking

### MATERIAL LIST



<input type="checkbox"/>	59 - 2" x 4" x 4' Decking 59 - 2" x 4" x 8' Decking 14.5 lb - #16 Casing Nails	Please Check One
<input type="checkbox"/>	38 - 2" x 6" x 4' Decking 38 - 2" x 6" x 8' Decking 9 lb - #16 Casing Nails	

- 17 2"x6"x6' P.T. Fir
- 6 2"x6"x12' P.T. Fir
- 17 2"x6" Joist Hangers
- 8 4"x4"x2' P.T. Fir
- 3 bg Concrete, Pre-mix
- 2.5 lb #16 Box Nails
- 1.5 lb Teco Nails (for Joist Hgr)

4'	8'
8'	4'
4'	8'
8'	4'

Deck Surface Pattern

SYMBOLS	
TT	-- Joist Hanger
■	-- 4" x 4" Post

See Deck Brochure for Complete Installation Instructions

**RICK'S**  
**CUSTOM FENCING & DECKING**  
[www.RicksFencing.com](http://www.RicksFencing.com)

HILLSBORO (503) 640-5434  
 GRESHAM (503) 669-0795  
 SALEM (503) 463-8331  
 VANCOUVER (360) 253-3792  
 TRI-CITIES (509) 736-3325