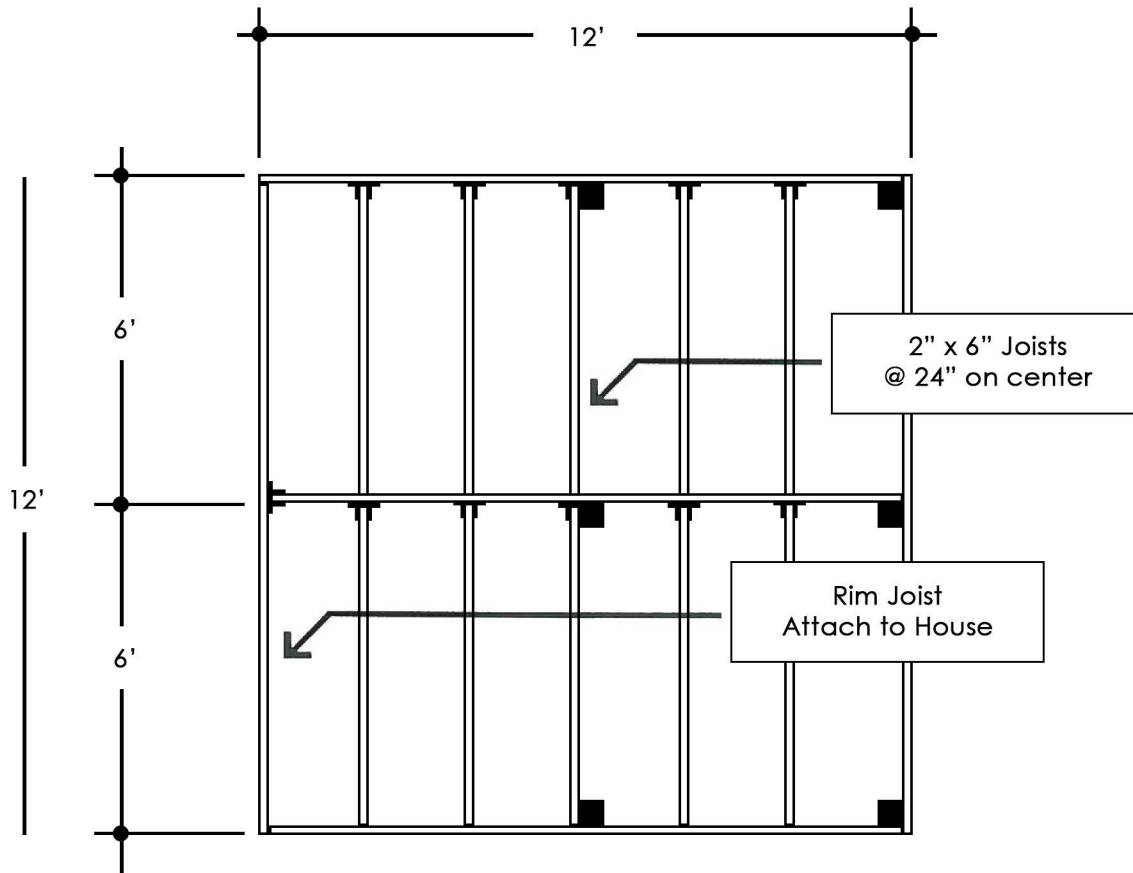


# 12'x12'

## Deck Package

### 2" Decking



Deck Framing Layout

SYMBOLS	
TT	-- Joist Hanger
■	-- 4" x 4" Post

4'	8'
8'	4'
4'	8'
8'	4'

Deck Surface Pattern

## MATERIAL LIST

<input type="checkbox"/>	40 - 2" x 4" x 4' Decking 40 - 2" x 4" x 8' Decking 9.5 lb - #16 Casing Nails	Please Check One
<input type="checkbox"/>	26 - 2" x 6" x 4' Decking 26 - 2" x 6" x 8' Decking 6 lb - #16 Casing Nails	

- 10 2"x6"x6' P.T. Fir
- 5 2"x6"x12' P.T. Fir
- 11 2"x6" Joist Hangers
- 6 4"x4"x2' P.T. Fir
- 2 bg Concrete, Pre-mix
- 1.5 lb #16 Box Nails
- 1 lb Teco Nails (for Joist Hgr)

See Deck Brochure for Complete Installation Instructions

**RICK'S**  
**CUSTOM FENCING & DECKING**  
[www.RicksFencing.com](http://www.RicksFencing.com)

HILLSBORO (503) 640-5434  
 GRESHAM (503) 669-0795  
 SALEM (503) 463-8331  
 VANCOUVER (360) 253-3792  
 TRI-CITIES (509) 736-3325